

# **Walmart Magento Integration Guide 0.1.5**

by CedCommerce Technical Publications

<b>1. Overview</b>	<b>3</b>
<b>2. Walmart-Magento Integration Extension Installation</b>	<b>3</b>
<b>3. Walmart Configuration Settings</b>	<b>4</b>
<b>4. Manage Walmart Profiles</b>	<b>11</b>
4.1. Add New Profile	12
4.2. Edit the Existing Profile	18
4.3. Delete the Profile	20
4.4. Submit Actions on the Walmart Profile Listing Page	22
4.5. Product Manager	25
4.5.1. Upload Products	27
<b>5. Item and Order Testing on Seller Account</b>	<b>29</b>
<b>6. Product Feeds</b>	<b>31</b>
<b>7. Walmart Orders</b>	<b>33</b>
7.1. View Walmart Orders	33
7.2. View Walmart Failed Orders	35
7.3. Refund	36
<b>8. Walmart Taxcodes</b>	<b>37</b>
<b>9. Walmart Cron</b>	<b>38</b>
9.1. Walmart Cron Details	38
9.2. Cron Status	39
<b>10. Walmart Knowledge Base</b>	<b>39</b>
<b>11. Extras</b>	<b>41</b>
11.1. View Walmart Category	41
11.2. View Walmart Attributes	42
11.2.1. Simple Type Attribute	43
11.2.2. Configurable Type Attribute	44

## 1. Overview

Walmart Magento Integration is an extension, developed by CedCommerce helps to integrate the Magento store with Walmart by establishing a synchronization of products, orders and refunds with the help of Walmart API.

The CRONs implemented in this extension help to automate the process thereby keeping it up to date.

This extension interacts with Walmart Marketplace to integrate the synchronized product listing between the Magento and the Walmart retailers. After installing the extension, merchant can create the Walmart Categories and the dependent attributes on the Magento store.

The process enables merchant to configure the desired product category into Magento for automatic submission of the selected product to the same Category on Walmart.

**The features of the Walmart Magento Integration extension are as follows:**

- Profile Based Product Upload
- Easy Walmart Category and Attribute mapping
- Manage Walmart Product and Upload Product (directly from grid and bulk upload all products)
- Product Synchronization
  - Automatic process on each product edit
  - Manual synchronization process
- Review Product/Inventory/Price Feeds
- Automated Order Import & Acknowledgement
- Shipment and Cancellation of Orders
- Automated Shipment with Shipworks/Shipstation
- Multiple Shipment of an Order
- Create Refund
- Upload Configurable Product(s)
- Bulk Product Upload/Publish
- Retire/Unpublish Selected Product(s)
- CRON Facility
- Knowledge Base
- Walmart Tax Codes

### Caution

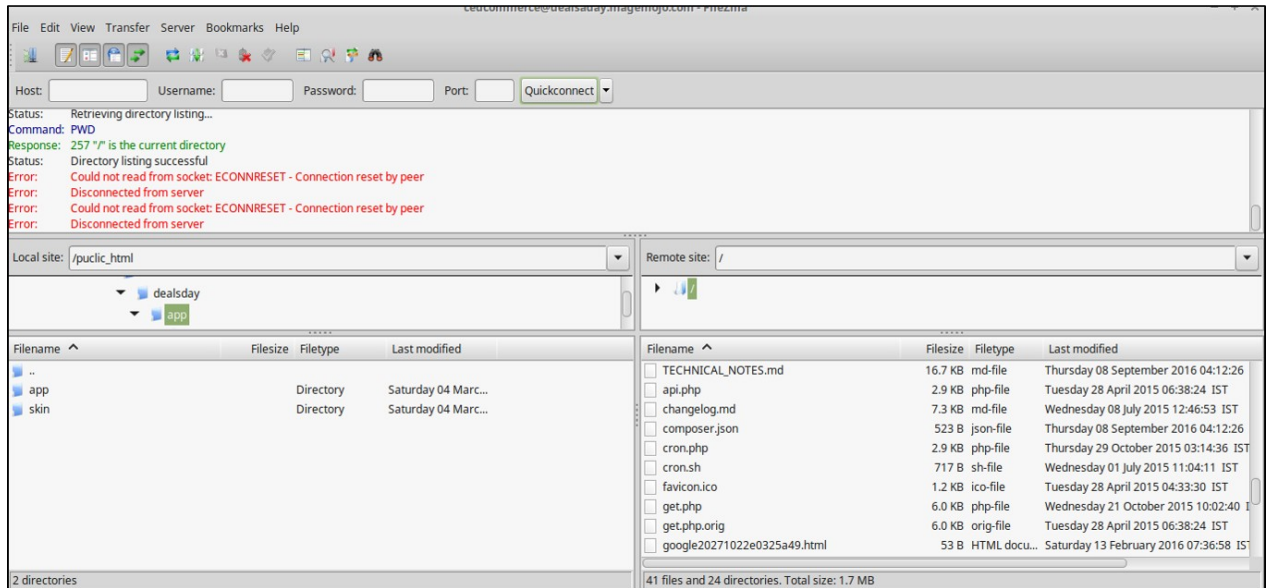


: Extension is heavily dependent on Crons for running various automated processes. So, make sure that Cron Job is properly configured and working on the server.

## 2. Walmart-Magento Integration Extension Installation

### To install the extension

1. Log in the **ftp**, and then go to Magento root folder (generally present under the *public\_html* folder).



2. Overwrite the *app*, *skin*, *js* and *var* folders in the same sequence as illustrated in the following steps:
  - a. Drag and Drop the *app/code*, *app/design*, *js*, *skin* and *var* directories.
  - b. Finally, upload the *app/etc* directory.  
After the folders are loaded successfully, the extension is installed or upgraded.

### 3. Walmart Configuration Settings

Once the extension is successfully installed on the Merchant's store, Walmart menu appears in the Magento Admin Panel. The merchant has to fill-in the API credentials in the **Walmart Configuration** page of the admin panel.

The user has to log in the Walmart Seller account to obtain the following API credentials:

- Walmart **Consumer Id**
- API **Secret Key**
- **Consumer Channel Type Id**

After obtaining the ids and the private keys, the merchant has to copy all of them one by one from the Walmart Seller account and paste it one by one to the Configuration page of the admin panel of the merchant.

To follow the process of copying and pasting of the consumer ids and private keys,

- Open the Walmart Seller account and the Magento Admin Panel in two different tabs or windows of the browser. Thus, copy the keys from the Walmart Seller account and paste them one by one to the Magento Admin Panel.

OR

- Use the **Get Walmart Credentials** button available on the Walmart Configuration page of the admin panel of the merchant.

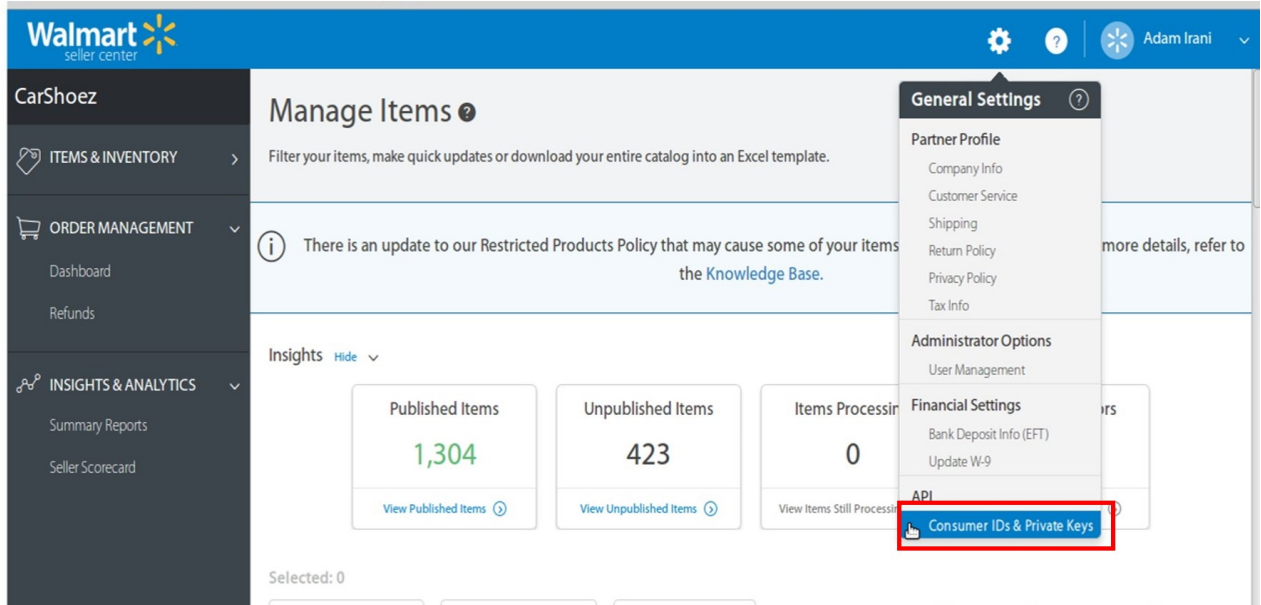
**To copy the API Credentials from the Walmart Seller account**

1. Open the **Walmart Seller** account.
2. Click the **Settings**

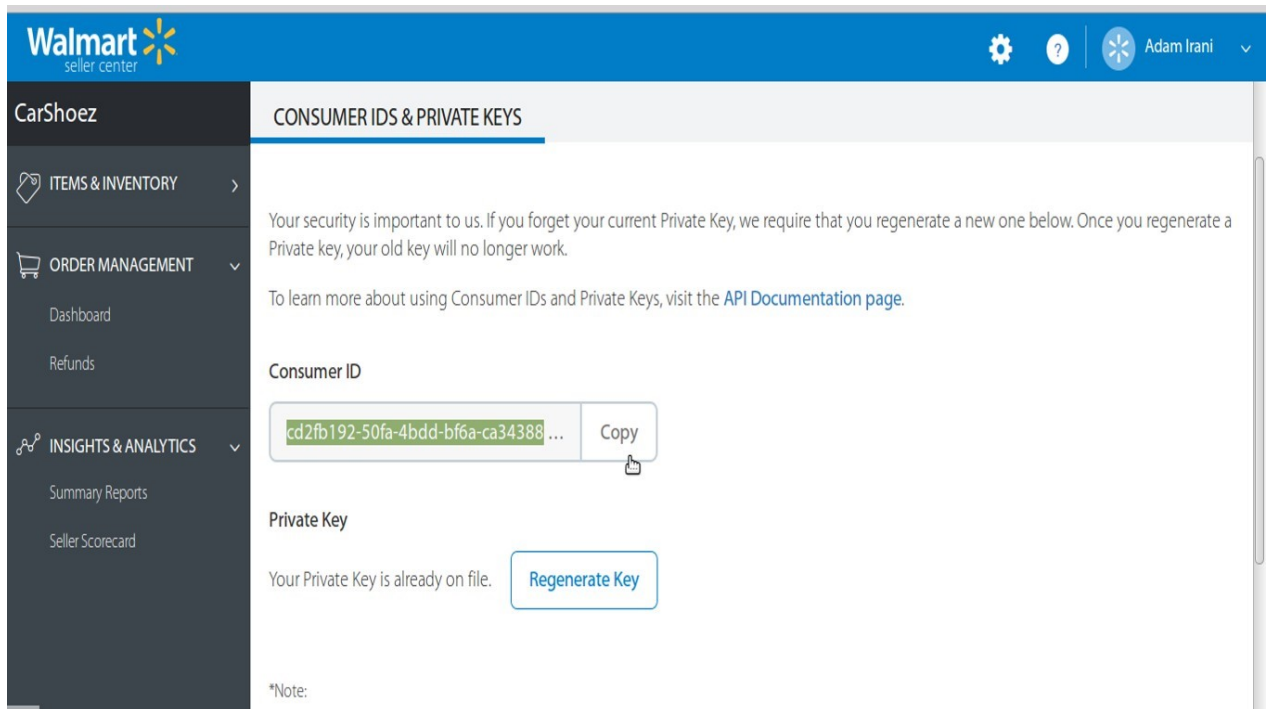


icon.

The **General Settings** menu appears as shown in the following figure:



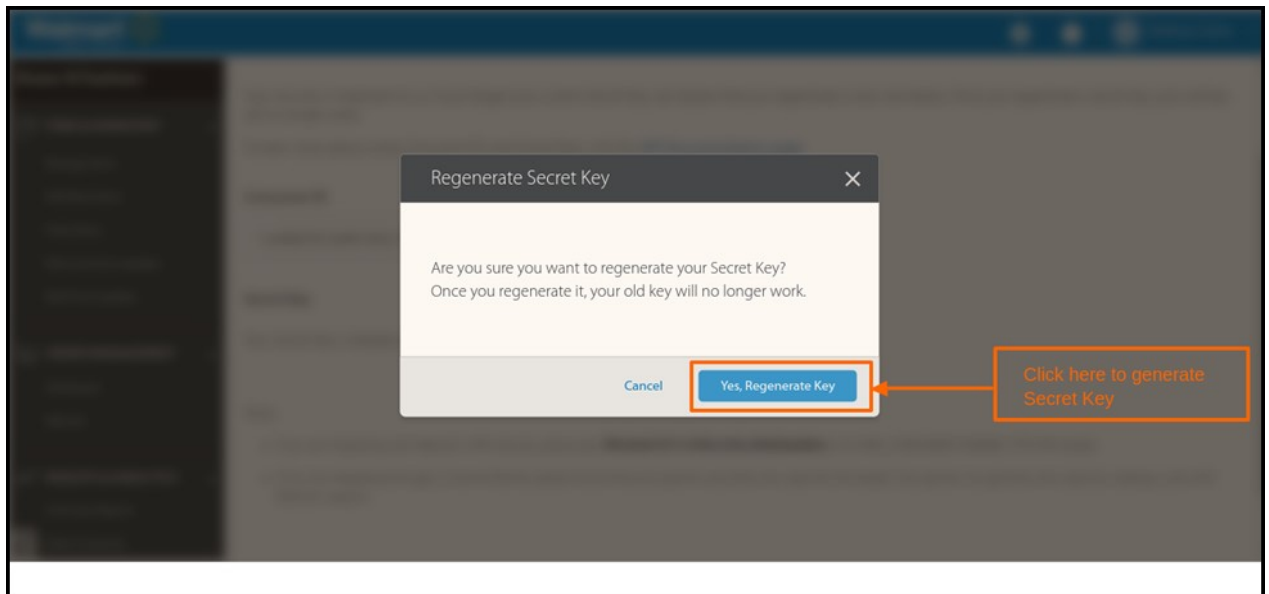
3. Under **API**, click **Consumer IDs & Private Keys**.  
The page appears as shown in the following figure:



4. Under **Consumer ID**, click the **Copy** button.

5. Under **Private Key**, click the **Regenerate Key** button.

The **Regenerate Secret Key** dialog box appears as shown in the following figure:



6. Click the **Yes, Regenerate Key** button.

The key is generated. Copy the generated key.

### ***To update the Walmart Configuration Setting of the extension***

1. Go to the **Magento Admin** panel.
2. On the top navigation bar, click the **Walmart** menu, and then click **Configuration**.



The **Walmart Configuration** page appears as shown in the following figure:

**Walmart Configuration**
Save Config

---

Walmart Api Settings

Enabled	<input type="text" value="Yes"/>	[WEBSITE]
Consumer Id	<input type="text" value="1535"/>	[GLOBAL]
Private key	<div style="border: 1px solid #ccc; padding: 5px; min-height: 100px;">dscs</div>	[GLOBAL]
Validate	<input type="button" value="Validate"/> <input type="button" value="Create Walmart a/c"/> <input type="button" value="Get Walmart Credentials"/>	[STORE VIEW]
Orders Fetch Start Date	<input type="text" value="2017-05-09"/> <small>▲ Date Format : YYYY-MM-DD</small>	[GLOBAL]
Choose Default Payment Method for Walmart Orders	<input type="text" value="Check / Money order"/>	[GLOBAL]
Store Admin Email Id	<input type="text"/>	[GLOBAL]
	<small>▲ Get Email When New Walmart Order Imported.Example: owner@example.com</small>	
Walmart Debug Mode	<input type="text" value="Yes"/>	[GLOBAL]
	<small>▲ Enable Walmart Debug Mode for Logging.</small>	
Walmart Customer Email	<input type="text"/>	[GLOBAL]
	<small>▲ Enter the Email for which customer will be created for Walmart Orders.</small>	
Walmart Order ID Prefix	<input type="text"/>	[GLOBAL]
	<small>▲ Walmart OrderId Prefix (Ex WM-)</small>	

3. Under **Walmart API Settings**, do the following steps:

- a. In the **Enabled** list, select **Yes**.
 

**Note:** Selecting the **No** option hides all other fields of **Walmart API Settings**. The Walmart menu does not appear on the top navigation bar.
- b. In the **Consumer Id** box, paste the corresponding **Consumer ID** copied from the **Consumer IDs & Private Keys** page of the **Walmart Seller Account**.
- c. In the **Private Key** box, paste the corresponding **Private Key** copied from the **Consumer IDs & Private Keys** page of the **Walmart Seller Account**.
- d. Click the **Validate** button.
 

If the entered ids and keys are valid then the success message appears, and if they are not valid then an error message appears.
- e. Click the **Get Walmart Credentials** button to to obtain the API credentials from the existing Walmart partner account.



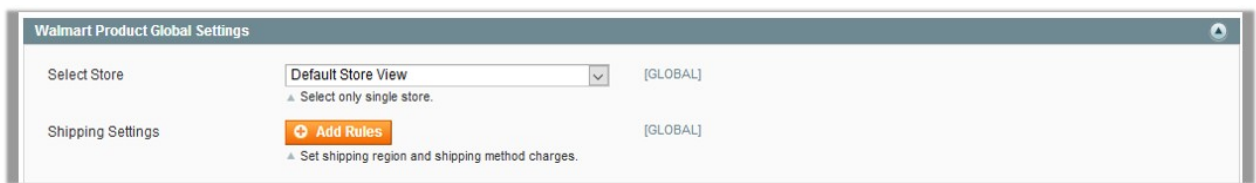
OR

Click the **Create Walmart Account** button to create the account to obtain the API credentials.

- f. In the **Orders Fetch Start Date** box, click the calendar icon, and enter the date.  
The date from when the user starts to fetch the order.
- g. In the **Choose Default Payment Method for Walmart Orders** list, select the required option.
- h. In the **Store Admin Email Id** box, enter the email-id where the admin wants to send the mail whenever new Walmart order is Imported.
- i. In the **Walmart Debug mode** list, select **Yes** to start Walmart Integration in the debug mode.  
It captures the log for the debug process.
- j. In the **Walmart Customer Email** box, enter the customer email-id .
- k. In the **Walmart Order ID Prefix** box, enter the prefix that the admin wants to add before the Walmart order Id.

4. Click the **Walmart Product Global Settings** tab.

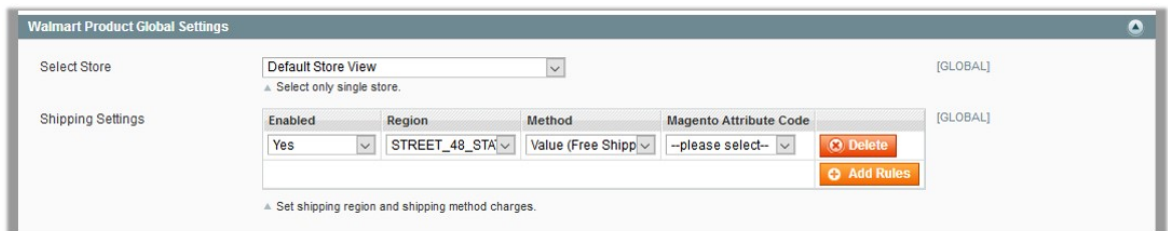
The **Walmart Product Global Settings** tab is expanded as shown in the following figure:



5. Under **Walmart Product Global Settings**, do the following steps:

- a. In the **Select Store** list, select the single store.
- b. To configure the shipping settings, click the **Add Rules** button.

The field is expanded and appears as shown in the following figure:



- c. In the **Enabled** list, select **Yes**.
- d. In the **Region** list, select the required region.
- e. In the **Method** list, select the required shipping method.
- f. In the **Magento Attribute Code** list, select the corresponding attribute code.

**Note:** Click the **Add Rules** button to add more shipping settings. To delete the rule, click the **Delete** button.

6. Click **Walmart Product Advanced Price Settings** tab.

The **Walmart Product Advanced Price Settings** tab is expanded as shown in the following figure:



7. Under **Walmart Product Advanced Price Settings**, enter the values in the corresponding fields.

- **Walmart Product Price:** This is to set a different price for all the products as shown in the following figure:

User can set the price on the following basis: –

- **Increase by Fixed Price:** If selected, then the **Enter Amount** field appears.
- **Increase by Fixed Percentage:** If selected, then the **Enter Percentage** field appears. Enter the numeric value to increase the price of the Walmart product price by the entered value % of Magento price

*For Example: Magento price + 5% of Magento price.*

Magento Price = 100

Select **Increase By Fixed Percentage** option

**Enter Percentage = 5**

$100 + 5\% \text{ of } 100 = 100 + 5 = 105$

Thus, Walmart Product Price = 105

- **Decrease by Fixed Price:** If selected, then the **Enter Amount** field appears.
- **Decrease by Fixed Percentage:** If selected, then the **Enter Percentage** field appears. Enter the numeric value to decrease the price of the the Walmart product price by the entered value % of Magento price

*For Example: Magento price – 5% of Magento price.*

Magento Price = 100

Select **Decrease By Fixed Percentage** option

**Enter Percentage = 5**

$100 - 5\% \text{ of } 100 = 100 - 5 = 95$

Thus, Walmart Product Price = 95

- **Product TaxCode:** Enter 7 digit product tax code.
- **Fullfillment Lag Time:** Enter Fullfillment Lag Time for products on Walmart.

8. Click the **Cron Settings** tab.

The **Cron Settings** tab is expanded as shown in the following figure:

Cron Settings		
Cron Settings Override	Yes	[WEBSITE]
Enable Order Cron	No	[WEBSITE]
	▲ Order Cron Enable/Disable	
Enable Inventory Cron	No	[WEBSITE]
	▲ Inventory Cron Enable/Disable	
Enable Price Cron	No	[WEBSITE]
	▲ Price Cron Enable/Disable	

9. Under **Cron Settings**, do the following steps:

- In the **Cron Settings** list, select **Yes** to enable the cron settings.

**Note:** Only when the admin selects **Yes**, the other fields appear.

- In the **Enable Order Cron** list, select **Yes** to enable the order cron.

The **Order Cron** field appears.

1. In the **Order Cron** box, enter the required value.

- In the **Enable Inventory Cron** list, select **Yes** to enable the order cron.

The **Product Inventory Update Cron** field appears.

- In the **Product Inventory Update Cron** box, enter the required value.

- In the **Enable Price Cron** list, select **Yes** to enable the order cron.

The **Product Price Update Cron** field appears.

- In the **Product Price Update Cron** box, enter the required value.  
The section appears as shown in the following figure:

Setting Name	Value	Scope
Cron Settings Override	Yes	[WEBSITE]
Enable Order Cron	Yes	[WEBSITE]
Order Cron	*/* 10 * * * *	[GLOBAL]
Enable Inventory Cron	Yes	[WEBSITE]
Product Inventory Update Cron	*/* 13 * * * *	[GLOBAL]
Enable Price Cron	Yes	[WEBSITE]
Product Price Update Cron	0 0 * * * *	[GLOBAL]

10. Click the **Walmart inventory rules** tab.  
The **Walmart inventory rules** tab is expanded as shown in the following figure:

Field Name	Value	Scope
Send Inventory on the Basis of Threshold	No	[GLOBAL]

11. Under **Walmart inventory rules**, do the following steps:
  - a. In the **Send Inventory on the Basis of Threshold** list, select **Yes** to send the inventory based on threshold.  
**Note:** Only when the admin selects **Yes**, the other fields appear. Threshold Inventory is the minimum count of an item that the store owner wants to keep in stock.  
The section appears as shown in the following figure:

Field Name	Value	Scope
Send Inventory on the Basis of Threshold	Yes	[GLOBAL]
Inventory Threshold Value		[GLOBAL]
Send Inventory for Lesser Than Threshold Case		[GLOBAL]
Send Inventory for Greater Than Threshold Case		[GLOBAL]

- b. In the **Inventory Threshold Value** box, enter the required value.
  - c. In the **Send Inventory for Lesser Than Threshold Case** box, enter the required value.
  - d. In the **Send Inventory for Greater Than Threshold Case** box, enter the required value.
12. Click the **Save Config** button.

## 4. Manage Walmart Profiles

Admin can create a new profile and assign the required products to the profile. While creating and editing the

profile, admin can map the Magento attributes to the Walmart attributes. These attributes are applicable to all the products that are assigned to the profile.

***Admin can do the following tasks:***

- Add new profile(<http://docs.cedcommerce.com/magento/walmart-magento-integration-guide-0-1-5-2?section=add-new-profile>)
- Edit the existing profile(<http://docs.cedcommerce.com/magento/walmart-magento-integration-guide-0-1-5-2?section=edit-the-existing-profile-2>)
- Delete the profile(<http://docs.cedcommerce.com/magento/walmart-magento-integration-guide-0-1-5-2?section=delete-the-profile-2>)
- Submit Actions on the Walmart Profile Listing Page(<http://docs.cedcommerce.com/magento/walmart-magento-integration-guide-0-1-5-2?section=submit-actions-3>)
- Upload Single Product, View Error Log, and Edit Product Information(<http://docs.cedcommerce.com/magento/walmart-magento-integration-guide-0-1-5-2?section=product-manager-2>)
- Submit Actions on the Product Manager page(<http://docs.cedcommerce.com/magento/walmart-magento-integration-guide-0-1-5-2?section=upload-products-2>)

## 4.1. Add New Profile

***To add a new profile***

1. Go to the **Magento Admin** panel.
2. On the top navigation bar, click the **Walmart** menu.  
The menu appears as shown in the following figure:



- Click the **Manage Walmart Profiles** menu.  
The **Walmart Profile Listing** page appears as shown in the following figure:

**Walmart Profile Listing** + Add New Profile

Page 1 of 1 pages | View 20 per page | Total 3 records found Reset Filter Search

Select All | Unselect All | Select Visible | Unselect Visible | 0 items selected Actions Submit

	ID	Profile Name	Status	Total Item	Active Item	Inactive Item	Action
Any							
<input type="checkbox"/>	1	profile name	Active	3	0	3	
<input type="checkbox"/>	2	profile name 2	Active	7	0	7	
<input type="checkbox"/>	3	profile name 3	Active	0	0	0	

- Click the **Add New Profile** button.  
The page appears as shown in the following figure:

**Profile Information** Back Reset Save Save and Continue Edit Save and Upload Product

**Add Walmart Profile**

**Profile Information**

Profile Code \*   
▲ For internal use. Please use only letters (a-z), numbers (0-9) or underscore(\_) in this field, first character should be a letter

Profile Name \*   
▲ Give some name to profile to identify them

Status \*   
▲ Make active to enable the profile

5. In the right panel, under **Profile Information**, do the following steps:
  - a. In the **Profile Code** box, enter a profile code.  
**Note:** It is only for the internal use. Use the unique profile code with no spaces. Start with small letters.
  - b. In the **Profile Name** box, enter the name of the profile.  
**Note:** Use the unique name to identify the profile.
  - c. In the **Status** list, select **Active** to enable the profile.  
**Note:** The Inactive option disables the profile.
6. Click the **Save and Continue** button.
7. In the left navigation panel, click the **Profile Configurations** menu.  
 The page appears as shown in the following figure:

8. In the right panel, under **Walmart Product Global Settings**, do the following steps:
  - a. In the **Select Store** list, select the single store.
  - b. To configure the shipping settings, click the **Add Rules** button.  
 The field is expanded and appears as shown in the following figure:

- c. In the **Enabled** list, select **Yes**.
  - d. In the **Region** list, select the required region.
  - e. In the **Method** list, select the required shipping method.
  - f. In the **Magento Attribute Code** list, select the corresponding attribute code.  
**Note:** Click the **Add Rules** button to add more shipping settings. To delete the rule, click the **Delete** button.
9. In the right panel, click **Walmart Product Advanced Price Settings** tab.  
 The **Walmart Product Advanced Price Settings** tab is expanded as shown in the following figure:

10. Under **Walmart Product Advanced Price Settings**, enter the values in the corresponding fields.

- **Walmart Product Price:** This is to set a different price for all the products as shown in the following figure:

The user can set the price on the following basis: –

- **Increase by Fixed Price:** If selected, then the **Enter Amount** field appears.
- **Increase by Fixed Percentage:** If selected, then the **Enter Percentage** field appears. Enter the numeric value to increase the price of the Walmart product price by the entered value % of Magento price  
*For Example, Magento price + 5% of Magento price.*  
 Magento Price = 100  
 Select **Increase By Fixed Percentage** option  
**Enter Percentage = 5**  
 $100 + 5\% \text{ of } 100 = 100 + 5 = 105$   
 Thus, Walmart Product Price = 105
- **Decrease by Fixed Price:** If selected, then the **Enter Amount** field appears.
- **Decrease by Fixed Percentage:** If selected, then the **Enter Percentage** field appears. Enter the numeric value to decrease the price of the Walmart product price by the entered value % of Magento price  
*For Example, Magento price – 5% of Magento price.*  
 Magento Price = 100  
 Select **Decrease By Fixed Percentage** option  
**Enter Percentage = 5**  
 $100 - 5\% \text{ of } 100 = 100 - 5 = 95$   
 Thus, Walmart Product Price = 95
- **Product TaxCode:** Enter 7 digit product tax code.
- **Fulfillment Lag Time:** Enter Fulfillment Lag Time for products on Walmart.

11. In the right panel, click the **Walmart inventory rules** tab.

The **Walmart inventory rules** tab is expanded as shown in the following figure:

12. Under **Walmart inventory rules**, do the following steps:

- In the **Send Inventory on the Basis of Threshold** list, select Yes to send the inventory based on a threshold.

**Note:** Only when the admin selects **Yes**, the other fields appear.

The section appears as shown in the following figure:

**Walmart inventory rules**

Send Inventory on the Basis of Threshold: Yes [GLOBAL]

Inventory Threshold Value: [ ] [GLOBAL]  
▲ Set inventory quantity on which lesser and greater condition can control.

Send Inventory for Lesser Than Threshold Case: [ ] [GLOBAL]  
▲ Send Quantity to Walmart for those products, whose inventory is LESSER than the inventory threshold.

Send Inventory for Greater Than Threshold Case: [ ] [GLOBAL]  
▲ Send Quantity to Walmart for those products, whose inventory is GREATER than the inventory threshold.

**Note:** Inventory Threshold Value is the minimum quantity of the inventory that the admin wants to have in hand.

- b. In the **Inventory Threshold Value** box, enter the required value.
  - c. In the **Send Inventory for Lesser Than Threshold Case** box, enter the required value.
  - d. In the **Send Inventory for Greater Than Threshold Case** box, enter the required value.
13. Click the **Save and Continue** button.
14. In the left navigation panel, click the **Walmart Category Mapping** menu.  
 The page appears as shown in the following figure:

**Profile Information**

- Profile Info
- Profile Configurations
- Walmart Category Mapping**
- Profile Products

**Add Walmart Profile** [Back] [Reset] [Delete] [Save] [Save and Continue Edit] [Save and Upload Product]

**Walmart Category Mapping**

Select Preferred Walmart Category to be Mapped

Occasion And Seasonal: [ ] Decorations And Favors: [ ]

**Walmart / Magento Attribute Mapping (Required/Optional mapping)**

Map Attribute for Walmart and Magento attribute

Required Attribute	Walmart Attribute	Magento Catalog Attribute	Action
sku	[ ]	sku	[ ]
productName	[ ]	name	[ ]
longDescription	[ ]	description	[ ]
shellDescription	[ ]	walmart_shelf_description	[ ]
shortDescription	[ ]	short_description	[ ]
mainImage/mainImageUrl	[ ]	image	[ ]
productIdentifiers/productIdentifier/productIdType	[ ]	walmart_productid_type	[ ]
productIdentifiers/productIdentifier/productId	[ ]	walmart_productid	[ ]
productTaxCode	[ ]	walmart_product_taxcode	[ ]
brand	[ ]	walmart_brand	[ ]
price/amount	[ ]	price	[ ]
shippingWeightValue	[ ]	weight	[ ]

[Add Attribute]

**Walmart / Magento Attribute Mapping (Variant Attribute Mapping)**

Map configurable attributes to magento attribute

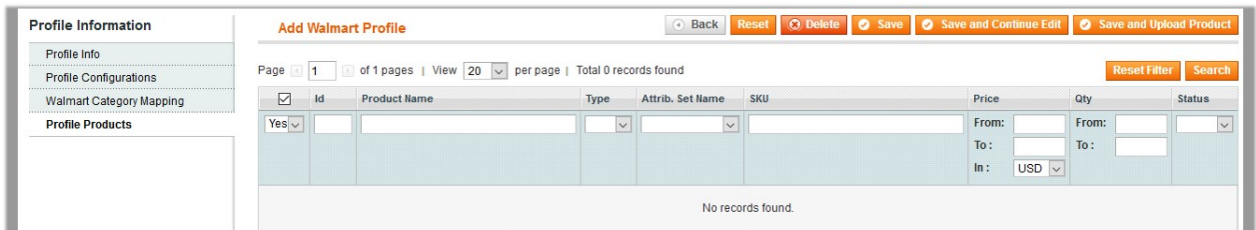
Config Attribute	Magento Catalog Attribute	Walmart Attribute	Action
bottle	[ ]	shape	[ ]

[Add Attribute]

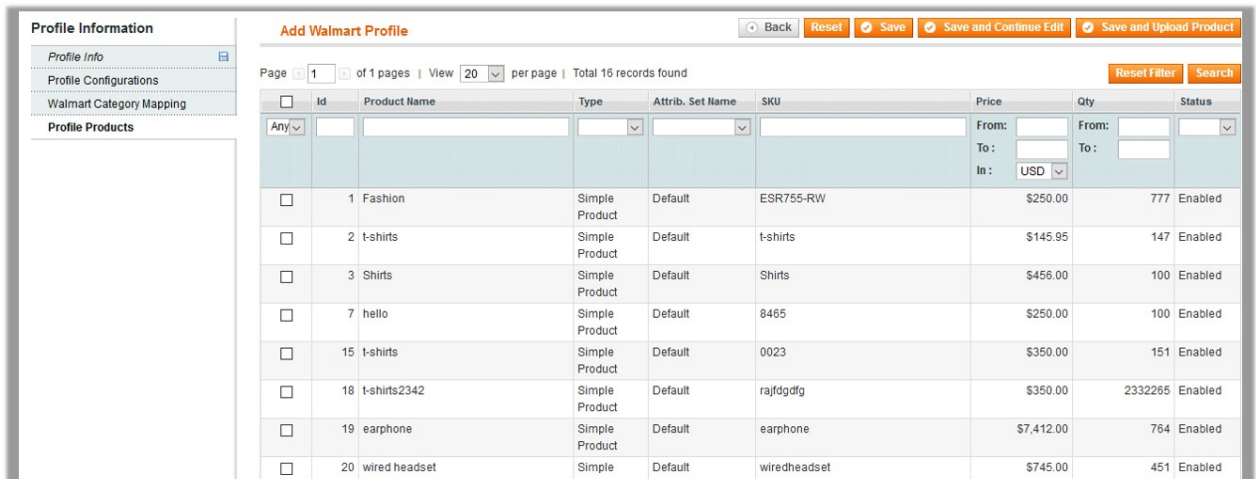
15. In the right panel, go to the **Walmart Category Mapping** section.
16. In the **Category** list, select the required **Walmart** category that the admin wants to map.  
 The **Child Category** list appears next to the **Category** list.
17. In the **Child Category** list, select the required child category.  
 Depending upon the selection of the category and the sub-categories, the Walmart and Magento attributes appear under the **Walmart / Magento Attribute Mapping (Required/ Optional mapping)** section, if exist.
18. Go to the **Walmart / Magento Attribute Mapping (Required/ Optional mapping)** section.



19. In the **Magento Catalog Attribute** column, select the required Magento attribute to map it with the corresponding Walmart attribute.
20. Repeat the mapping of all the required or optional Magento attributes listed with the corresponding Walmart attributes.
21. Click the **Add Attribute** button to add more attributes.
22. Go to the **Walmart / Magento Attribute Mapping (Variant Attribute Mapping)** section.
23. In the **Magento Catalog Attribute** column, select the required Magento attribute.
24. In the **Walmart Attribute** column, select the required Walmart attribute to map it with the corresponding Magento attribute.
25. Click the **Add Attribute** button to add more attributes.
26. Click the **Save and Continue** button.
27. In the left navigation panel, click the **Profile Products** menu.  
The page appears as shown in the following figure:



- Since no products are assigned to the profile, there are no products listed in the table.
28. Click the **Reset Filter** button.  
All the products are listed in the table as shown in the following figure:



29. Select the check box associated with the required product that the admin wants to assign to the new profile.  
**Note:** Admin can assign a product to only one profile.
30. Click the **Save** button.  
The created profile is saved and listed on the Walmart Profile Listing page.  
Or  
Click the **Save and Continue Edit** button to save the created profile and continue editing, if required.  
Or

Click the **Save and Upload Product** button to save the profile and make ready to upload the product on Walmart.

The assigned products are listed on the **Product Manager** page as shown in the following figure:

The screenshot shows the 'Product Manager' interface. At the top, there are navigation options like 'Page 1 of 1 pages', 'View 20 per page', and 'Total 3 records found'. Below this is a table with the following columns: ID, Sku, Image, Price, Name, Qty, Visibility, Status, Type, Walmart Product Status, Validation, Upload, and Edit. The table contains three rows of product data:

ID	Sku	Image	Price	Name	Qty	Visibility	Status	Type	Walmart Product Status	Validation	Upload	Edit
26	Starbucks_bottle		\$412.00	Starbucks_bottle	102	Catalog, Search	Enabled	Simple Product	UNPUBLISHED	INVALID	Upload	Edit
27	Milton		\$845.00	Milton	152	Catalog, Search	Enabled	Simple Product	UNPUBLISHED	INVALID	Upload	Edit
28	Bottle_config		\$784.00	Bottl	0	Catalog, Search	Enabled	Configurable Product	UNPUBLISHED	INVALID	Upload	Edit

## 4.2. Edit the Existing Profile

### *To edit the existing profile*

1. Go to the **Magento Admin** panel.
2. On the top navigation bar, click the **Walmart** menu.  
The menu appears as shown in the following figure:



3. Click **Manage Walmart Profiles**.

The **Walmart Profile Listing** page appears as shown in the following figure:

Walmart Profile Listing + Add New Profile

Page 1 of 1 pages | View 20 per page | Total 3 records found Reset Filter Search

Select All | Unselect All | Select Visible | Unselect Visible | 0 items selected Actions Submit

	ID	Profile Name	Status	Total Item	Active Item	Inactive Item	Action
Any							
<input type="checkbox"/>	1	profile name	Active	3	0	3	
<input type="checkbox"/>	2	profile name 2	Active	7	0	7	
<input type="checkbox"/>	3	profile name 3	Active	0	0	0	

On this page all the available profiles are listed.

4. Click the required row of the profile that the admin wants to edit.

OR

In the **Action** column, click the arrow button, and then click **Edit Profile**.

The **Edit Profile** page appears as shown in the following figure:

5. Make the changes as per requirement.

6. Click the **Save** button.

The edited profile is saved and listed on the **Walmart Profile Listing** page.

Or

Click the **Save and Continue Edit** button to save the created profile and continue editing, if required.

Or

Click the **Save and Upload Product** button to save the profile and make ready to upload the product on Walmart.com.

The assigned products are listed on the **Product Manager** page as shown in the following figure:

ID	Sku	Image	Price	Name	Qty	Visibility	Status	Type	Walmart Product Status	Validation	Upload	Edit
26	Starbucks_bottle		\$412.00	Starbucks_bottle	102	Catalog, Search	Enabled	Simple Product	UNPUBLISHED	INVALID	Upload	Edit
27	Milton		\$845.00	Milton	152	Catalog, Search	Enabled	Simple Product	UNPUBLISHED	INVALID	Upload	Edit
28	Bottle_config		\$784.00	Bottl	0	Catalog, Search	Enabled	Configurable Product	UNPUBLISHED	INVALID	Upload	Edit

## 4.3. Delete the Profile

### To delete the existing profile

1. Go to the **Magento Admin** panel.
2. On the top navigation bar, click the **Walmart** menu.  
The menu appears as shown in the following figure:



3. Click **Manage Walmart Profiles**.

The **Walmart Profile Listing** page appears as shown in the following figure:

**Walmart Profile Listing** + Add New Profile

Page 1 of 1 pages | View 20 per page | Total 3 records found Reset Filter Search

Select All | Unselect All | Select Visible | Unselect Visible | 0 items selected Actions Submit

	ID	Profile Name	Status	Total Item	Active Item	Inactive Item	Action
Any							
<input type="checkbox"/>	1	profile name	Active	3	0	3	
<input type="checkbox"/>	2	profile name 2	Active	7	0	7	
<input type="checkbox"/>	3	profile name 3	Active	0	0	0	

On this page all the available profiles are listed.

4. Click the required row of the profile that the admin wants to delete.

The **Edit Profile** page appears as shown in the following figure:

**Profile Information** Back Reset Delete Save Save and Continue Edit Save and Upload Product

**Profile Information**

- Profile Info
- Profile Configurations
- Walmart Category Mapping
- Profile Products

**Edit Walmart Profile**

**Profile Information**

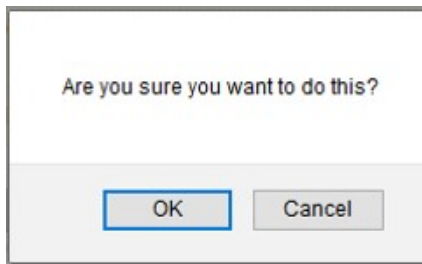
Profile Code \*   
▲ For internal use. Please use only letters (a-z), numbers (0-9) or underscore(\_) in this field, first character should be a letter

Profile Name \*   
▲ Give some name to profile to identify them

Status \*   
▲ Make active to enable the profile

5. Click the **Delete** button.

A confirmation dialog box appears as shown in the following figure:



6. Click the **OK** button.

The profile is deleted.

## 4.4. Submit Actions on the Walmart Profile Listing Page

Admin can delete the selected profiles and also can change the status of the profiles in bulk.

### *To delete the selected profiles in Bulk*

1. Go to the **Magento Admin** panel.
2. On the top navigation bar, click the **Walmart** menu.  
The menu appears as shown in the following figure:



3. Click **Manage Walmart Profiles**.

The **Walmart Profile Listing** page appears as shown in the following figure:

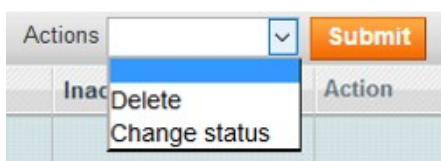
ID	Profile Name	Status	Total Item	Active Item	Inactive Item	Action
1	profile name	Active	3	0	3	[Dropdown]
2	profile name 2	Active	7	0	7	[Dropdown]
3	profile name 3	Active	0	0	0	[Dropdown]

On this page all the available profiles are listed.

4. Select the check boxes associated with the required profiles.

5. Click the Arrow button next to the **Actions** field.

The **Actions** list appear as shown in the following figure:



6. In the **Actions** list, click **Delete**, and then click the **Submit** button.

A confirmation dialog box appears as shown in the following figure:

7. Click the **OK** button.  
The selected profiles are deleted.

**To change the status of the selected profiles**

1. Go to the **Magento Admin** panel.
2. On the top navigation bar, click the **Walmart** menu.  
The menu appears as shown in the following figure:

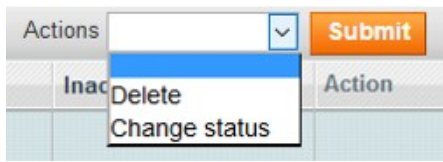


3. Click **Manage Walmart Profiles**.  
The **Walmart Profile Listing** page appears as shown in the following figure:

	ID	Profile Name	Status	Total Item	Active Item	Inactive Item	Action
<input type="checkbox"/>	1	profile name	Active	3	0	3	[Action]
<input type="checkbox"/>	2	profile name 2	Active	7	0	7	[Action]
<input type="checkbox"/>	3	profile name 3	Active	0	0	0	[Action]

- On this page all the available profiles are listed.
4. Select the check boxes associated with the required profiles.
  5. Click the Arrow button next to the **Actions** field.  
The **Actions** list appear as shown in the following figure:





- In the **Status** list, click **Change status**.  
The **Status** field appears next to the Actions list.



- In the **Status** list, select the required option, and then click the **Submit** button.  
The status is changed and a success message appears.

## 4.5. Product Manager

On the **Product Manager** page, admin can view, edit, and upload the individual product. Also, the admin can view the error message if any error exists in any product details. The admin can also submit certain actions on the selected products available on the **Product Manager** page.

### To upload single product

- Go to the **Magento Admin** panel.
- On the top navigation bar, click the **Walmart** menu, and then click **Manage Walmart Profiles**.  
The **Walmart Profile Listing** page appears as shown in the following figure:

Walmart Profile Listing							Add New Profile	
Page 1 of 1 pages   View 20 per page   Total 3 records found							Reset Filter	Search
Select All   Unselect All   Select Visible   Unselect Visible   0 items selected							Actions	Submit
ID	Profile Name	Status	Total Item	Active Item	Inactive Item	Action		
1	profile name	Active	3	0	3			
2	profile name 2	Active	7	0	7			
3	profile name 3	Active	0	0	0			

- On this page all the available profiles are listed.
- Scroll down to the required profile.
  - In the **Action** column, click the **Arrow** button, and then click **Upload Products**.  
The **Product Manager** page appears as shown in the following figure:

ID	Sku	Image	Price	Name	Qty	Visibility	Status	Type	Walmart Product Status	Validation	Upload	Edit
26	Starbucks_bottle		\$412.00	Starbucks_bottle	102	Catalog, Search	Enabled	Simple Product	UNPUBLISHED	INVALID	Upload	Edit
27	Milton		\$845.00	Milton	152	Catalog, Search	Enabled	Simple Product	UNPUBLISHED	INVALID	Upload	Edit
28	Bottle_config		\$784.00	Bottl	0	Catalog, Search	Enabled	Configurable Product	UNPUBLISHED	INVALID	Upload	Edit

All the products assigned to the profile are listed on this page.

5. Scroll down to the required product.

6. In the **Upload** column, click the **Upload** link.

If the product is uploaded successfully, then the success message appears on the top of the page.

If there is an error, then the error message appears on the top of the page.

### To View the error log

1. Go to the **Product Manager** page.

2. Scroll down to the required product.

3. In the **Validation** column, click the **INVALID** button.

The relevant error message appears as shown in the figure.



### To view and edit product information

1. Go to the **Product Manager** page.

2. Scroll down to the required product.

3. In the **Edit** column, click the **Edit** link.

The **Product Information** page appears as shown in the following figure:

**Product Information** Starbucks\_bottle (Default)

General

Name \* Starbucks\_bottle

Description \* Starbucks\_bottle

testing

Walmart

4. In the left navigation panel, click the **Walmart** menu.  
The page appears as shown in the following figure:

5. Enter the required information, and then click the **Save** button.  
6. To sync the Magento Product with Walmart, click the **Sync With Walmart** button.

### 4.5.1. Upload Products

The admin can upload the products that are assigned to the selected profile and are listed on the **Product Manager** page to Walmart.

*Other than the **Validate & Upload Product(s) to Walmart** action, the admin can also perform the following actions on the selected products available on the **Product Manager** page:*

- **Validate Selected Product(s):** To validate the product before uploading it to the Walmart website. It displays the corresponding validation error, if any. If there is no error, it confirms that the product is ready to upload.
- **Product Price Update:** To update the price of the selected products on Walmart. For example, if the user has changed the product price on the Magento store and also wants to change the price on Walmart then this action is applicable. The price is updated when the user submits this action for the selected product.
- **Product Inventory Update:** To update the inventory of the selected products on Walmart. This action completes all the job related to the product inventory and also it manages the quantity related issues.
- **Retire Selected Product(s):** To withdraw the selected products so that it is neither used nor ordered. On submitting this action, the product is not listed on Walmart. Thus, nobody can order them from Walmart.
- **Sync Walmart Product Status:** To get the request from Walmart to update the status of the products on the Magento store. It helps the user to view the status of the product. , unpublished, transmit, data fix, system error, or so on.

**Note:** These actions are also sbmitted similarly as submitting the **Validate & Upload Product(s)** action for uploading the products.

**To upload products**

1. Go to the **Magento Admin** panel.
2. On the top navigation bar, click the **Walmart** menu.  
The menu appears as shown in the following figure:



3. Click **Manage Walmart Profiles**.  
The **Walmart Profile Listing** page appears as shown in the following figure:

Walmart Profile Listing							<a href="#">Add New Profile</a>	
Page 1 of 1 pages   View 20 per page   Total 3 records found							<a href="#">Reset Filter</a>	<a href="#">Search</a>
<a href="#">Select All</a>   <a href="#">Unselect All</a>   <a href="#">Select Visible</a>   <a href="#">Unselect Visible</a>   0 items selected							Actions	<a href="#">Submit</a>
ID	Profile Name	Status	Total Item	Active Item	Inactive Item	Action		
1	profile name	Active	3	0	3	<a href="#">Action</a>		
2	profile name 2	Active	7	0	7	<a href="#">Action</a>		
3	profile name 3	Active	0	0	0	<a href="#">Action</a>		

On this page all the available profiles are listed.

4. Scroll down to the required profile.
5. In the **Action** column, click the Arrow button, and then click **Upload Products**.  
The **Product Manager** page appears as shown in the following figure:

ID	Sku	Image	Price	Name	Qty	Visibility	Status	Type	Walmart Product	Actions
26	Starbucks_bottle		\$412.00	Starbucks_bottle	102	Catalog, Search	Enabled	Simple Product	UNPUBLISHED	INVALID Upload Edit
27	Milton		\$845.00	Milton	152	Catalog, Search	Enabled	Simple Product		INVALID Upload Edit
28	Bottle_config		\$784.00	Bottl	0	Catalog, Search	Enabled	Configurable Product	UNPUBLISHED	INVALID Upload Edit

All the products assigned to the profile are listed on this page.

6. Select the check box associated with the product that the admin wants to upload it to Walmart.
7. In the **Actions** list, click the arrow button, and then click **Validate & Upload Products**.
8. Click the **Submit** button.

The **Uploading Products to Walmart** page appears as shown in the following figure:

Starting Product Upload execution, please wait...

Warning: Please do not close the window during Uploading data

Total 1 Batch(s) Found.

Batch 1 products Upload Request Send Successfully on Walmart.com.

SKU: 'Bottle\_config' -  
 Fix issue for subproducts  
 SKU: 'Starbucks\_bottle' -  
 shelfDescription:Required-Attribute-Empty  
 productIdentifiers/productIdentifier/productId : Invalid ProductId Check Digit:Required-Attribute-Empty  
 productIdentifiers/productIdentifier/productId:Required-Attribute-Empty  
 brand:Required-Attribute-Empty  
 Fix issue for subproducts  
 SKU: 'Milton' -  
 shelfDescription:Required-Attribute-Empty  
 productIdentifiers/productIdentifier/productId : Invalid ProductId Check Digit:Required-Attribute-Empty  
 productIdentifiers/productIdentifier/productId:Required-Attribute-Empty  
 brand:Required-Attribute-Empty

100% 1 Of 1 Processed.

1 Batch(s) Successfully Upload Requested.

Finished product upload execution.

## 5. Item and Order Testing on Seller Account

After the product is uploaded successfully, the items appear in the Staged status until the admin establishes as a seller. The admin can preview how the prices and content appears to the Walmart customers before officially going for live with the entire catalog. Admin can publish the selected items for Order Testing before all the items are officially published.

Admin has to publish and purchase single item by placing two orders on Walmart.com and then complete the following three order scenarios before going live:

- **Acknowledge & Cancel** at least one order
- **Acknowledge & Ship** at least one order
- **Refund** one of your Shipped orders

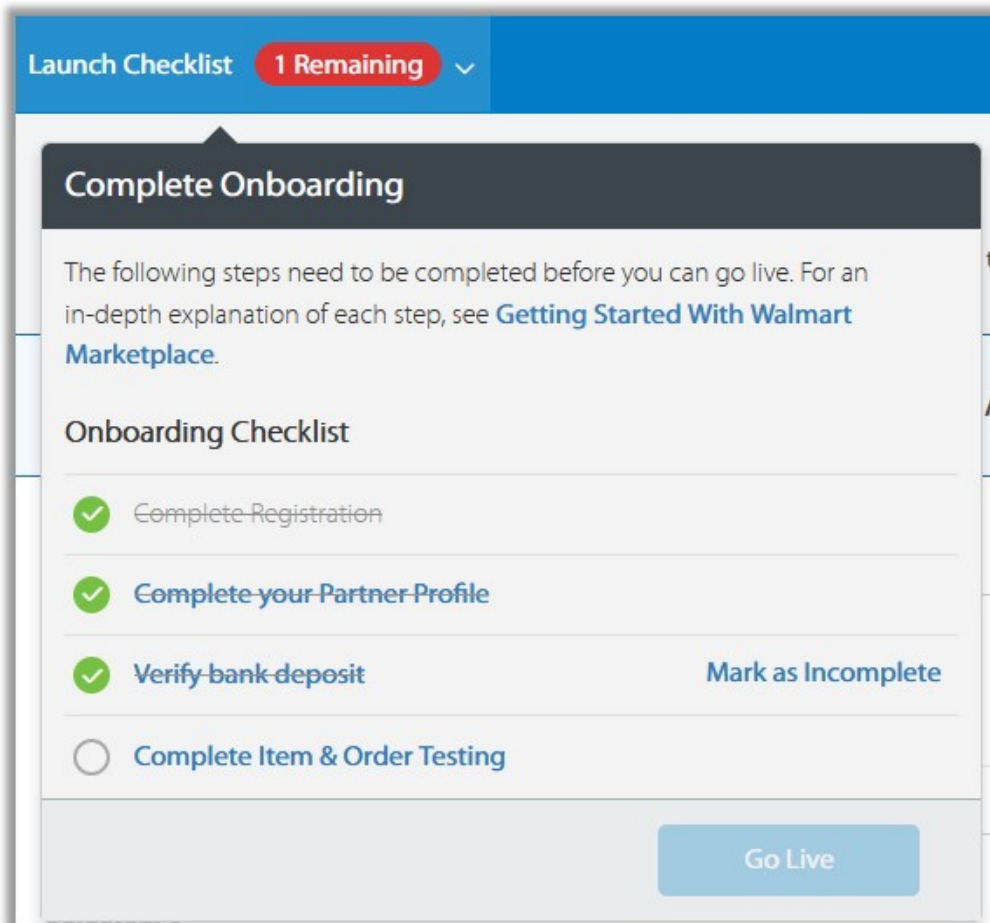
### To follow the process of Item and Order Testing

1. Log in the Seller(<https://seller.walmart.com/>)

account.

2. On the top navigation bar, click **Launch Checklist**.

The Complete Onboarding dialog box appears as shown in the following figure:



3. Click to select the **Complete Item & Order Testing** option.

The **Item & Order Testing** page appears as shown in the following figure:

**Walmart seller center** Launch Checklist **1 Remaining** John Thomas

### Item & Order Testing

Publish and purchase at least one item on Walmart.com and complete the three order scenarios below before you go live.

**Publish item(s)**  
Publish at least one of your items that is in Staged status

**Purchase item(s)**  
Purchase at least one of your Published items on Walmart.com

**Order scenarios**

- Acknowledge & Cancel at least one order
- Acknowledge & Ship at least one order
- Refund one of your Shipped orders

Mark as Done

Selected: 0

<input type="checkbox"/>	Status	Item Details	Price	Units	Actions
<input type="checkbox"/>	Stage	WonderSlim Vegetarian Joe (7 ct) SKU: WS116	\$12.95	1	<a href="#">Preview item</a> <a href="#">Publish item</a>

- In the **Item Details** column, click the **Preview Item** link to verify the content and pricing of your items in the Stage status.
- In the **Actions** column, click the **Publish Item** link.  
Once the item is published, the status changes to **Published**, and the link in the **Action** column changes to **Purchase Item**.
- In the **Actions** column, click the **Purchase Item** link.  
The page is redirected to the live Item Page where the admin can purchase the item on Walmart.com.  
**Note:** Admin can publish items only that are in **Stage** status.
- Test the following three order scenarios:
  - Acknowledge & Cancel**(<http://docs.cedcommerce.com/walmart-magento-m1-integration-guide-0-1-5/?section=view-walmart-orders-2>)  
at least one order
  - Acknowledge & Ship**(<http://docs.cedcommerce.com/walmart-magento-m1-integration-guide-0-1-5/?section=view-walmart-orders-2>)  
at least one order
  - Refund**(<http://docs.cedcommerce.com/walmart-magento-m1-integration-guide-0-1-5/?section=refund-3>)  
one of your Shipped orders

## 6. Product Feeds

After uploading the product on Walmart or after updating the product inventory or the product price, the user can check the status of the feed and sync the selected feeds or all the feeds from the Walmart Feed Details page.

### To view product feeds status

- Go to **Magento Admin Panel**.
- On the top navigation bar, click the **Walmart** menu, and then click **Product Feeds**.  
The **Walmart Feed Details** page appears as shown in the following figure:

**Walmart Feed Details** Sync Feeds

Page 1 of 2 pages | View 20 per page | Total 39 records found Reset Filter Search

Select Visible | Unselect Visible | 0 items selected Actions Submit

	Id #	Feed Id #	Feed Status	Feed Source	Items Received	Items Succeeded	Items Failed	Items Processing	Feed Date	Feed File	Feed Errors
<input type="checkbox"/>	52		PROCESSED	SELLER	126	126	0	0	2017-05-31 02:55:30	File Not Available	SUCCESS
<input type="checkbox"/>	51		PROCESSED	SELLER	480	479	1	0	2017-05-31 03:01:46	File Not Available	50 ERROR(S)
<input type="checkbox"/>	50		PROCESSED	SELLER	480	479	1	0	2017-05-31 03:01:46	File Not Available	50 ERROR(S)
<input type="checkbox"/>	49		PROCESSED	SELLER	476	476	0	0	2017-05-31 03:31:35	File Not Available	SUCCESS
<input type="checkbox"/>	48		PROCESSED	SELLER	476	476	0	0	2017-05-31 03:31:37	File Not Available	SUCCESS
<input type="checkbox"/>	47		PROCESSED	SELLER	471	470	1	0	2017-05-31 03:33:04	File Not Available	50 ERROR(S)
<input type="checkbox"/>	46		PROCESSED	SELLER	478	478	0	0	2017-05-31 03:56:30	File Not Available	SUCCESS
<input type="checkbox"/>	45		PROCESSED	SELLER	474	473	1	0	2017-05-31 03:58:01	File Not Available	50 ERROR(S)

3. Do the required one from the following tasks:

- View the status of the feed in the **Feed Status** column.
- To synchronize the feeds between Walmart and Magento, click the **Sync Feeds** button.  
Or  
Select the check box associated with the product and submit the **Sync Feed** action.
- To delete the feed, select the check box associated with the product and submit the **Delete Feed** action.
- To view the product feed error, click the **Error** button.  
**Note:** If the Success button appears in the **Feed Errors** column of the corresponding feed, then it means that the product is successfully synchronized with Walmart.

**Note :** The user can also view the detailed error report from Walmart seller panel.

**To view product feed status on Walmart seller panel**

1. Go to the **Walmart** seller panel.
2. In the left navigation menu, click **Feed Status**.  
The page appears as shown in the following figure:

**Walmart seller center** Adam Irani

**Feed Status**

ITEM FEED | INVENTORY FEED | PRICE FEED | PROMO FEED

You can view your Item Feed statuses below. If any of your feeds have errors listed in the Error column, fix the error and reupload your feed.

Feed ID	Date	Status	Submitted	Processed	Pending	Errors	Error File
1F10E462CEC94B378C3994A16FCF80...	3/17/17	Processed	20	20	0	0	Download Errors
9CB9B4A8586D4F8885027C3F196340F...	3/17/17	Processed	20	20	0	0	Download Errors
6AED554253854C6795CD3F7C409FD6...	3/16/17	Processed	20	20	0	0	Download Errors

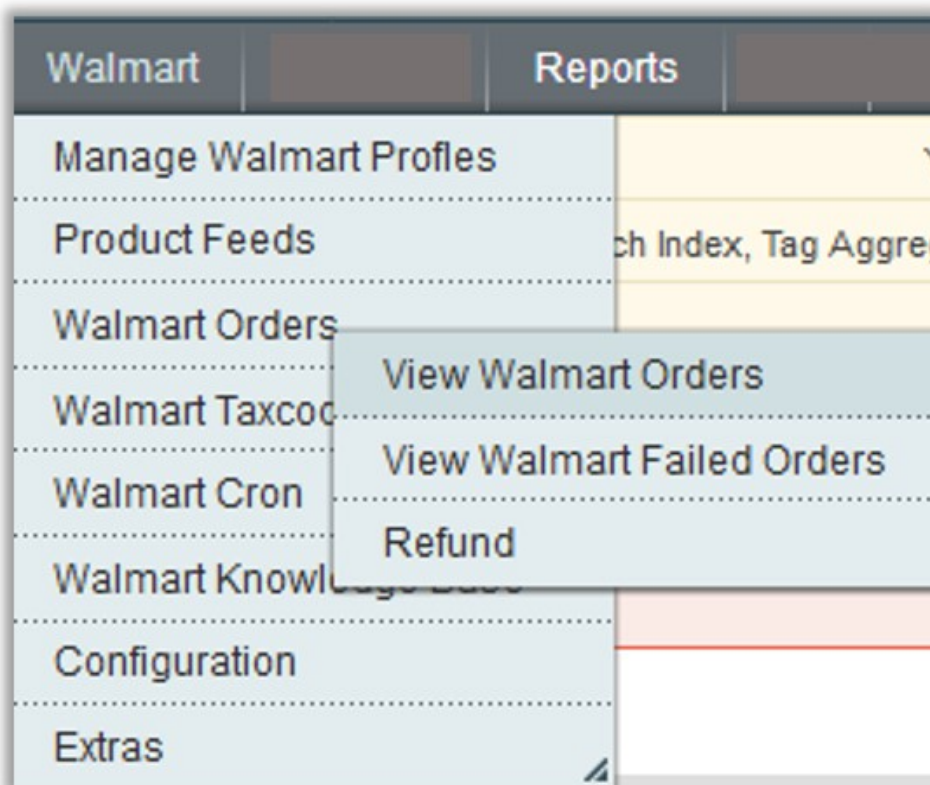


3. In the **Error File** column, click the **Download Errors** link associated with the required product feed.
4. Fix the errors, if any.
5. Re-upload the product feed.

## 7. Walmart Orders

On the Walmart menu, Walmart Orders has the following three sub-menus as shown in the following figure:

- View Walmart Orders(<http://docs.cedcommerce.com/magento/walmart-magento-integration-guide-0-1-5-2?section=view-walmart-orders-2>)
- View Walmart Failed Orders(<http://docs.cedcommerce.com/magento/walmart-magento-integration-guide-0-1-5-2?section=view-walmart-failed-orders-3>)
- Refund(<http://docs.cedcommerce.com/magento/walmart-magento-integration-guide-0-1-5-2?section=refund-3>)



### 7.1. View Walmart Orders

The user can fetch and view all the order details fetched from Walmart.

**To view Walmart Orders**

1. Go to **Magento Admin Panel**.
2. On the **Walmart** menu, point to **Walmart Orders**, and then click **View Walmart Orders**.  
The **Walmart Orders Details** page appears as shown in the following figure:

**Walmart Orders Details** [Fetch Latest Walmart Orders](#)

Page 1 of 1 pages | View 20 per page | Total 1 records found

Export to: CSV [Export](#) [Reset Filter](#) [Search](#)

Select Visible | Unselect Visible | 0 items selected

Magento Order #	Walmart Purchase Order Id #	Bill to Name	Ship to Name	Date Ordered	Delivery By	Status	G.T. (Purchased)	
Any				From: To:	From: To:		From: To:	
<input type="checkbox"/>	100000024	3843952598894	Linda Meyer	Linda Meyer	Oct 29, 2016 2:08:46 AM	Nov 9, 2016 11:00:00 PM	Completed	106.0000

3. Click the **Fetch Latest Walmart Orders** button.  
If the order is imported successfully then, a new record is found in the **Walmart Order Details** table as shown in the above figure.

**Notes:**

- Orders are automatically imported through CRON in every 10 minutes.
  - Whenever the latest orders are imported from Walmart, a Notification appears in the notification area of the Admin panel for those orders and they are Auto-Acknowledged as soon as they are imported in the Magento admin panel.
  - As per Walmart's Policy, orders should be acknowledged within 60 minutes.
  - If no Order is imported, then check the Failed order log on the **Failed Walmart Orders Import Log** page.
  - Order are auto rejected on Walmart in the following conditions:
    - When Walmart Product SKU does not exist in Magento.
    - When Product is Out of Stock in Magento.
    - When product is disabled in Magento.
4. In the **Magento Order#** column, click the link associated with the required order.  
The page appears as shown in the following figure:

**Magento Admin Panel** Global Record Search Logged in as admin | Tuesday, March 21, 2017 | [Log Out](#)

Dashboard **Sales** Catalog Customers Promotions Newsletter CMS Walmart Jet Reports System [Get help for this page](#)

**Latest Message:** Reminder: Change Magento's default phone numbers and calouts before site launch You have 16 critical, 6 major, 15 minor and 107 notice unread message(s). [Go to notifications](#)

**One or more of the Indexes are not up to date:** Product Attributes, Product Prices, Catalog URL Rewrites, Product Flat Data, Category Flat Data, Category Products, Catalog Search Index, Stock Status, Tag Aggregation Data. Click here to go to [Index Management](#) and rebuild required indexes.

**Latest Message:** You have 7 New [Returns](#) from [Jet.com](#). Kindly Acknowledge. ✓ ✕

**Order View** [Order # 100000024 | Mar 21, 2017 4:46:31 AM](#) [Back](#) [Send Email](#) [Credit Memo](#) [Reorder](#)

**Information**

Order # 100000024 (the order confirmation email is not sent)	Account Information
Order Date: Mar 21, 2017 4:46:31 AM	Customer Name: <a href="#">Linda Meyer</a>
Order Status: Complete	Email: <a href="mailto:ikurrac@amphony.com">ikurrac@amphony.com</a>
Purchased From: Main Website Main Website Store Default Store View	
Billing Address <a href="#">Edit</a>	Shipping Address <a href="#">Edit</a>
Linda Meyer 8211 Densmore Avenue N Seattle, WA, 98103 United States	Linda Meyer 8211 Densmore Avenue N Seattle, WA, 98103 United States

5. In the left navigation menu, click **Ship By Walmart**.  
The page appears as shown in the following figure:

- Orders imported from Walmart uses **Payment Method** depending on the **System Configuration Settings** of Walmart extension.
6. Under **Shipment Info**, enter the corresponding values in the following fields:
    - a. In the **Shipping carrier used** list, select the required option.
    - b. In the **Method Code** list, select the required option.
    - c. In the **Tracking Number** box, enter a value.
    - d. In the **Ship Date** box, enter a date.
  7. Under **Shipment Items**, enter the corresponding values in the following fields:
    - a. In the **Quantity to Ship** box, enter a value.  
The number of quantity that the user can ship. The value cannot be greater than the **Qty Available for Ship** value.
    - b. In the **Quantity Cancelled** box, enter a value.  
The number of quantity that the user wants to reject. The value cannot be greater than the **Qty Available for Ship** value. The success message appears, if the order is shipped successfully.
  8. Click the **Submit Shipment** button.

**Notes :**

- a. Order **Shipment** is sent to Walmart.
- b. Order **Invoice** and **Shipment** is created automatically in Magento.
- c. Order **Status** changes to **Complete** on Walmart.
- d. The **status** of order changes to **Completed** on Magento.

## 7.2. View Walmart Failed Orders

The users can view the list of failed Walmart orders on the Failed Walmart Orders Import Log page.

**In the following conditions, Orders are not imported from Walmart:**

- If any product in the Walmart Order is Out of Stock in Magento.
- If any product in the Walmart Order is disabled in Magento.
- If any Product does not exist in Magento or is deleted from Magneto after uploading on Walmart.
- If the selected Payment Method in Walmart System Configuration Setting is not available in Magento.

**To view Walmart failed orders**

1. Go to **Magento Admin Panel**.
2. On the **Walmart** menu, point to **Walmart Orders**, and then click **View Walmart Failed Orders**.  
The **Failed Walmart Orders Import Log** page appears as shown in the following figure:

ID	Purchase order ID	Reference Number	Reason to failed	Order Data	
<input type="checkbox"/>	7	3843952598994	5731668731958	Product L1700 is Not Enabled or not in stock or inventory<=0 or Product visibility is set to not visible individually	{\"purchaseOrderId\":\"3843952598994\",\"customerOrderId\":\"5731668731958\",\"customerEmailId\":\"kurrac@amphony.com\",\"orderDate\":\"1477732126000\",\"si\":{\"phone\":\"8005312334\",\"estimatedDeliveryDate\":\"1478761200000\",\"estimatedShipDate\":\"1477893600000\",\"methodCode\":\"Standard\",\"postalAddress\":{\"na... Meyer\",\"address1\":\"8211 Densmore Avenue N\",\"address2\":\"null\",\"city\":\"Seattle\",\"state\":\"WA\",\"postalCode\":\"98103\",\"country\":\"USA\",\"addressType\":\"RESIDENTIAL\"}},\"orderLines\":{\"orderLine\":{\"lineNumber\":\"1\",\"item\":{\"productName\":\"Amphony Wireless Speaker Kit with one Wireless Amplifier (New Model), Makes Surround Speakers Wireless, 300ft range, Connect to any Audio Source, Better-than Bluetooth Digital Wireless\",\"sku\":\"L1700\"},\"charges\":{\"charge\":{\"chargeType\":\"PRODUCT\",\"chargeName\":\"ItemPrice\",\"chargeAmount\":{\"currency\":\"USD\",\"amount\":99,\"tax\":null},\"chargeType\":\"SHIPPING\",\"chargeName\":\"Shipping\",\"chargeAmount\":{\"currency\":\"USD\",\"amount\":7,\"tax\":null}}},\"orderLineQuantity\":{\"unitOfMeasurement\":\"EACH\",\"amount\":\"1\",\"statusDate\":\"1478172408000\",\"orderLineStatuses\":{\"orderLineStatus\":{\"status\":\"Acknowledged\",\"statusQuar\":{\"unitOfMeasurement\":\"EACH\",\"amount\":\"1\",\"cancellationReason\":\"null\",\"trackingInfo\":\"null\"}},\"refund\":\"null\"}}}

This page displays the failed orders with the order id and the reason for the failure.

### 7.3. Refund

If a front-end user returns the product or order directly to the merchant without the involvement of walmart.com, then the merchant has to send a request on walmart.com for completing this type of return.

To complete this type of return the merchant has to create a new refund.

#### *To create a new refund*

1. Go to **Magento Admin Panel**.
2. On the **Walmart** menu, point to **Walmart Orders**, and then click **Refund**.  
The **Refund Management** page appears as shown in the following figure:

ID	Refund Id	Magento Order #	Refund Status	Action
No records found.				

3. Click the **Create New Refund** button.  
The page appears as shown in the following figure:

4. Under **Refund Information**, in the **Enter Purchase Order Id** box, enter a value.
5. Click the **Fetch Order Info** button.

If the entered purchase order Id is correct, then the respective order details are displayed product-wise in the new sections as follows:

- **Refund id:** Refund id that the merchant receives from walmart.com.
- **Refund Merchant Id:** Identification number of the merchant.
- **Order item id:** Identification number generated at the time of placing order.
- **Qty Requested:** Total number of items or product ordered in the current order.
- **Qty Already Refunded:** Items or product that have been already refunded to the front-end user.
- **Qty Available for Refund:** Number of items or product that can be refunded.
- **Qty Returned:** Number of items or product returned by the customer.  
**Note:** Returned quantity should be less than or equal to the shipped quantity.
- **Qty Refunded:** Number of items or product that the merchant wants to refund.  
**Note:** Refunded quantity should be less than or equal to the Returned quantity.
- **Refund tax:** Tax applied on the items or products returned.
- **Refund Amount:** Amount that Walmart has to return to the front-end user.
- **Refund Shipping Cost:** Shipping cost applicable to the returned product.
- **Refund Shipping tax:** Shipping tax applicable to the returned product.
- **Refund Feedback:** Feedback of merchant on the returned product.
- **Refund Reason:** Reason why the front-end user has returned the product.

6. Click the **Submit Refund** button.

## 8. Walmart Taxcodes

The **Walmart Product Taxcodes** page displays all the sales tax codes that the merchant needs for items and shipping. Sales tax codes helps Walmart to collect the proper sales tax from the merchant so that the merchant can remit to the proper tax authorities.

**Note:** Walmart does not provide tax advice to merchants, not even advises which code to select for their items. Consult the tax advisor for more guidance on which tax code to select.

### *To view the Walmart product taxcodes*

1. Go to **Magento Admin Panel**.
2. On the **Walmart** menu, click **Walmart Taxcodes**.

The **Walmart Product Taxcodes** page appears as shown in the following figure:

Walmart Product Taxcodes			
Page 1 of 250 pages   View 20 per page   Total 4985 records found			
<a href="#">Reset Filter</a> <a href="#">Search</a>			
ID	Walmart Tax Code	Category Description	Sub Category Description
4985	2049946	Compostable Plastic Bag provided free of charge by a restaurant in connection with a sale of a taxable meal. Code assumes vendor elects to report any assessed bag fee on their meals tax return when applicable (MA)	Food and Beverages for Immediate Consumption and Related Charges - Carrying Applicable Sales Tax and Meals Tax Rules
4984	2049945	Recyclable Paper Bag provided free of charge by a restaurant in connection with a sale of a taxable meal. Code assumes vendor elects to report any assessed bag fee on their meals tax return when applicable (MA)	Food and Beverages for Immediate Consumption and Related Charges - Carrying Applicable Sales Tax and Meals Tax Rules
4983	2049944	Sale of a prepared food item (not containing raw egg) that is not in a "ready to eat" state, sold by an entity primarily in the business of offering food for immediate consumption (e.g. pizza dough sold by a pizzeria)	Food and Beverages for Immediate Consumption and Related Charges - Carrying Applicable Sales Tax and Meals Tax Rules
4982	2049943	Sale of Beer – less than or equal to 2.56% ABW/3.2% ABV where the seller holds an intoxicating liquor license (MN)	Food and Beverages for Immediate Consumption and Related Charges - Carrying Applicable Sales Tax and Meals Tax Rules
4981	2049942	Sale of Beer – greater than 2.56% ABW/3.2% ABV but less than or equal to 5% ABW/6.335% ABV	Food and Beverages for Immediate Consumption and Related Charges - Carrying Applicable Sales Tax and Meals Tax Rules
4980	2049941	Sale of Beer – less than or equal to 2.56% ABW/3.2% ABV where the seller holds a 3.2% malt liquor license (MN)	Food and Beverages for Immediate Consumption and Related Charges - Carrying Applicable Sales Tax and Meals Tax Rules
4979	2049937	Automotive aerosol paint in 2-pack containers sold to an auto repair shop. The seller must have received necessary documentation/information supporting a claim of exemption. If required by the jurisdiction, this code presumes the charge for paint is separately stated on the customer's invoice from the repair shop	Construction Materials

## 9. Walmart Cron

Walmart Integration, an extension developed by CedCommerce, is a one-stop integration, which establishes synchronization of inventory, price, other details for product creation and its management between Magento® store and Walmart with the help of Crons.

*The user can view the following details:*

- Walmart Cron Details(<http://docs.cedcommerce.com/magento/walmart-magento-integration-guide-0-1-5-2?section=walmart-cron-details-2>)
- Cron Status(<http://docs.cedcommerce.com/magento/walmart-magento-integration-guide-0-1-5-2?section=cron-status-2>)

### 9.1. Walmart Cron Details

The **Walmart Cron Details** page displays all the Cron details scheduled in Walmart.

*To view the Walmart Cron details*

1. Go to **Magento Admin Panel**.
2. On the **Walmart** menu, click **Walmart Cron**.

The **Walmart Cron Details** page appears as shown in the following figure:

**Walmart Cron Details**

Page 1 of 8 pages | View 20 per page | Total 158 records found [Reset Filter](#) [Search](#)

ID	Job Code	Status	Messages	Created At	Scheduled At	Executed At	Finished At
937962	ewimageopt_optimizelimages	error	exception 'Mage_Core_Exception' with message 'Curl Error (28): Operation timed out after 300000 milliseconds with 0 bytes received' in /chroot/home/aquaticl/aquaticlife.com/html/app/Mage.php:595 Stack trace: #0 /chroot/home/aquaticl/aquaticlife.co...	2017-03-20 18:50:04	2017-03-20 19:00:00	2017-03-20 19:00:10	
938026	ewimageopt_optimizelimages	error	exception 'Mage_Core_Exception' with message 'Curl Error (7): Failed to connect to 2400:cb00:2048:1::681c:c39: Network is unreachable' in /chroot/home/aquaticl/aquaticlife.com/html/app/Mage.php:595 Stack trace: #0 /chroot/home/aquaticl/aquaticlife...	2017-03-20 23:00:25	2017-03-20 23:00:00	2017-03-20 23:05:05	
938257	ewimageopt_optimizelimages	error	exception 'Mage_Core_Exception' with message 'Curl Error (7): Failed to connect to 2400:cb00:2048:1::681c:c39: Network is unreachable' in /chroot/home/aquaticl/aquaticlife.com/html/app/Mage.php:595 Stack trace: #0 /chroot/home/aquaticl/aquaticlife...	2017-03-21 00:50:04	2017-03-21 01:00:00	2017-03-21 01:00:11	
938280	core_email_queue_send_all	success		2017-03-21 04:19:44	2017-03-21 04:19:00	2017-03-21 04:20:02	2017-03-21 04:20:02

## 9.2. Cron Status

The updated status appears as mentioned in the following table:

Activity	Time Required for Updating (min)
Order Creation	Every 10 minutes
Feeds Sync	Every 1 day
Inventory Sync	Every 15 Minutes
Price Sync	Twice a Day

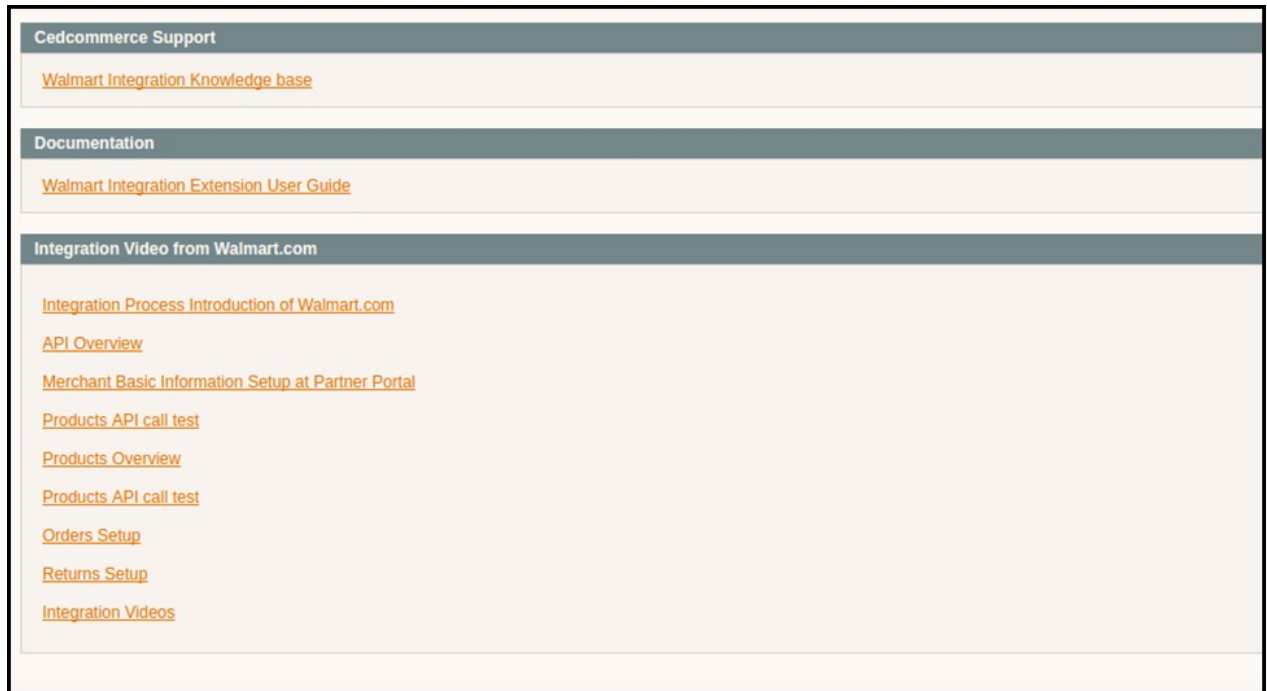
## 10. Walmart Knowledge Base

This page displays a knowledge base link to view and understand the working of the extension properly and get the clarifications on Walmart-Magento Integration.

### To view the Walmart Knowledge Base

1. Go to Magento Admin Panel.
2. On the Walmart menu, click **Walmart Knowledge Base**.

The page appears as shown in the following figure:



**On this page of the Admin panel, the following links are available:**

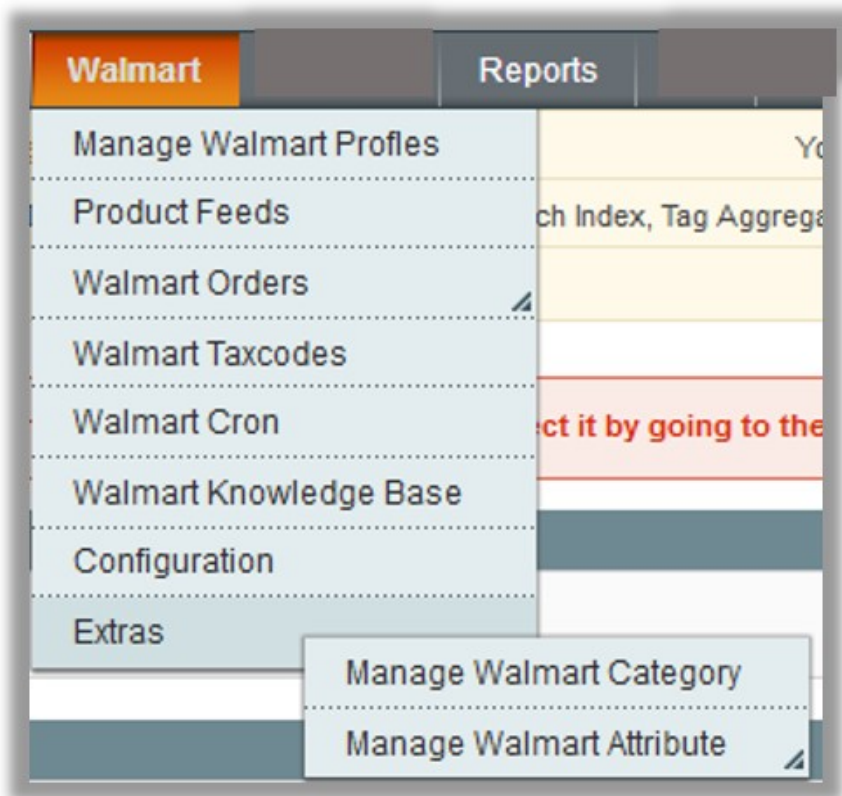
- **CedCommerce Support:** *Walmart Integration Knowledge base*(<http://marketplace.walmart.com/knowledgebase/>)
- **Documentation:** *Walmart Integration Extension User Guide*(<http://cedcommerce.com/cedgen/index/download/?file=walmart/walmart-magento-1-integration.pdf>)
- **Walmart-Magento Integration Video:** Walmart-Magento Integration Video(<https://youtu.be/sFOhhX0iAOW>)
- **Walmart-Magento Integration FAQs:**
  - How to sell on Walmart Marketplace? (<http://cedcommerce.com/blog/api-integration/walmart-api-integration/how-to-sell-on-walmart-marketplace/>)
  - How to get API keys from Walmart Marketplace ?(<http://marketplace.walmart.com/knowledgebase/articles/Article/Defining-Attributes>)
  - How to Define Attributes For Item Setup?(<http://marketplace.walmart.com/knowledgebase/articles/Article/Defining-Attributes>)
  - How to Select The Best Category For An Item? ([http://marketplace.walmart.com/knowledgebase/articles/File\\_Download/Selecting-The-Best-Category-For-An-Item](http://marketplace.walmart.com/knowledgebase/articles/File_Download/Selecting-The-Best-Category-For-An-Item))
  - How To Set Up A Variant Group/Products? (<http://marketplace.walmart.com/knowledgebase/articles/Article/How-To-Set-Up-A-Variant-Group>)
  - How to Choose Current Tax Codes For The Walmart Marketplace?([http://marketplace.walmart.com/knowledgebase/articles/File\\_Download/Current-Taxware-Tax-Codes-for-the-Walmart-Marketplace](http://marketplace.walmart.com/knowledgebase/articles/File_Download/Current-Taxware-Tax-Codes-for-the-Walmart-Marketplace))



- How to generate UPC code ? (<http://cedcommerce.com/blog/api-integration/walmart-api-integration/generate-upc-code/>)

## 11. Extras

On the Walmart menu, the **Extras** menu has the following sub-menus as shown in the following figure:



### 11.1. View Walmart Category

User has to Map Walmart Category to Magento Category to upload products on Walmart admin panel.

*To view the Walmart categories to the Magento categories*

1. Go to **Magento Admin Panel**.
2. On the **Walmart** menu, click the **Extras** menu, and then click **Manage Walmart Category**.  
The **Walmart Category Listing** Page appears as shown in the following figure:

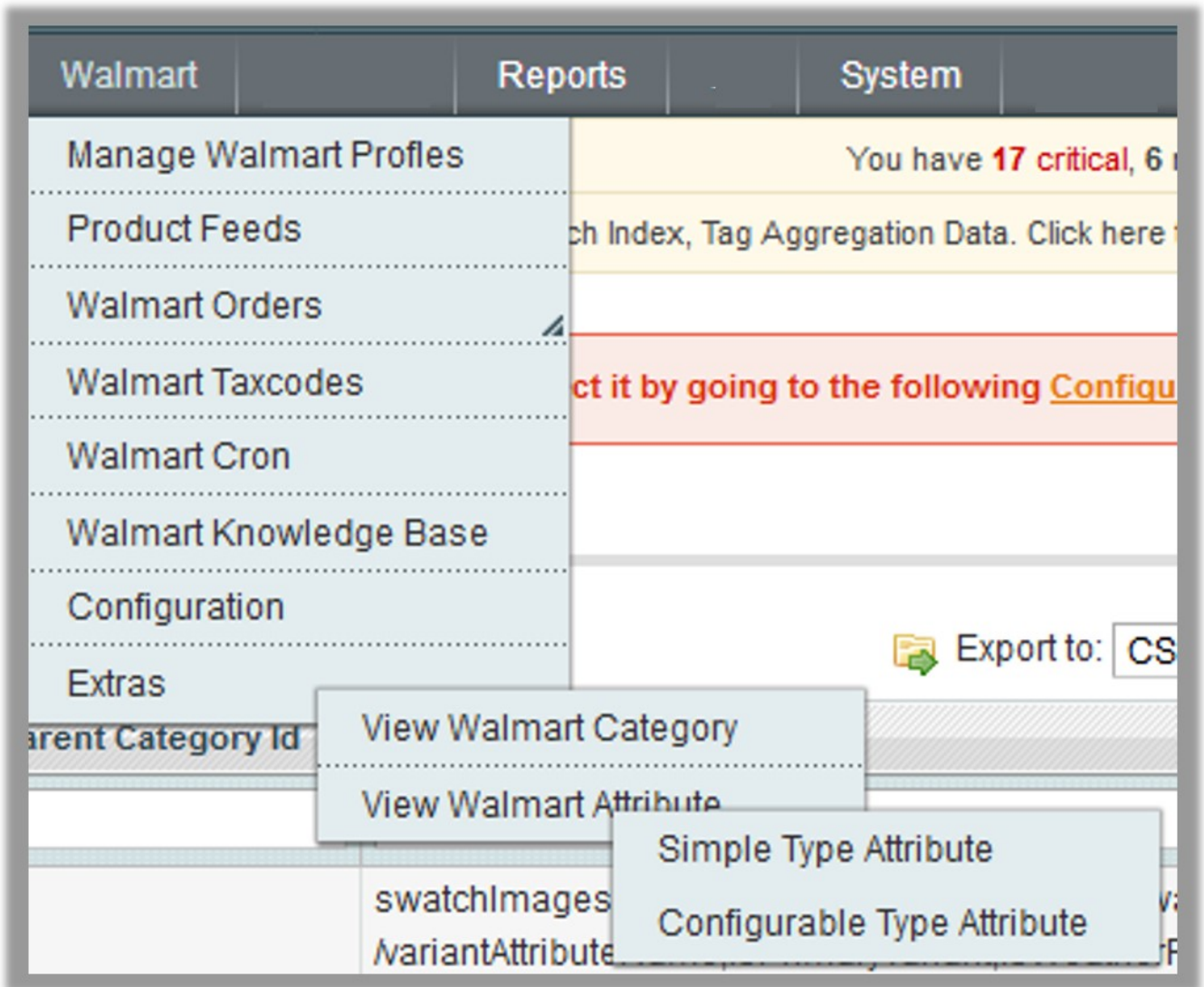
Walmart Category Listing					
Page 1 of 7 pages		View 20 per page		Total 127 records found	
		Export to: CSV		Export	
		Reset Filter		Search	
ID ↑	Walmart Category Id	Magento Category Id	Walmart Category Name	Walmart Parent Category Id	Walmart Attributes
1	ToolsAndHardware		Tools And Hardware	0	swatchImages/swatchImage/swatchImageUrl,swatchImages/swatchImage/swatchVariantAttribute,accessoriesIncl/VariantAttributeName,isPrimaryVariant,isWeatherResistant,isFireResistant,brand,manufacturer,color/colorValue,ma/recommendedUse,isIndustrial,isWaterproof,shape
2	Home		Home	0	swatchImages/swatchImage/swatchImageUrl,swatchImages/swatchImage/swatchVariantAttribute,collection,variant/fabricContentValue,finish,homeDecorStyle,fabricCareInstructions/fabricCareInstruction,brand,manufacturer,themeA/geGroupValue,recommendedRooms/recommendedRoom,batteriesRequired,batterySize,isReusable,isDisposable/characterValue,powerType,occasion/occasionValue,isPersonalizable,isPortable,cleaingCareAndMaintenance,isC/recommendedUse,recycledMaterialContent/recycledMaterialContentValue/recycledMaterial,recycledMaterialConten/percentageOfRecycledMaterial,isRetractable,isWheeled,isFoldable,isIndustrial,isAssemblyRequired,assemblyInst
3	OccasionAndSeasonal		Occasion And Seasonal	0	swatchImages/swatchImage/swatchImageUrl,swatchImages/swatchImage/swatchVariantAttribute,variantAttributeN/holidayLightingStyleValue,fabricCareInstructions/fabricCareInstruction,brand,manufacturer,modelNumber,manufac
4	Animal		Animal	0	animalBreed,swatchImages/swatchImage/swatchImageUrl,swatchImages/swatchImage/swatchVariantAttribute,ani/VariantAttributeName,variantGroupId,isPrimaryVariant,fabricContent/fabricContentValue,fabricCareInstructions/fabric/colorValue,animalType,material/materialValue,pattern/patternValue,isPortable,isFoldable,maximumWeight/unit,max
5	Baby		Baby	0	swatchImages/swatchImage/swatchImageUrl,swatchImages/swatchImage/swatchVariantAttribute,ageRange,minir/VariantAttributeName,variantGroupId,isPrimaryVariant,fabricContent/fabricContentValue,fabricCareInstructions/fabricCareInstruction,brand,condition,manufacturer,modelNumber,manufacturerPartNumber,gender,color/colorValu/materialValue,numberOfPieces,character/characterValue,occasion/occasionValue,isPersonalizable,isPortable,ISM/recycledMaterial,recycledMaterialContent/recycledMaterialContentValue/percentageOfRecycledMaterial,recommend/unit,maximumRecommendedAge/measure,minimumRecommendedAge/unit,minimumRecommendedAge/measu
6	ArtAndCraft		Art And Craft	0	/disposableBaby/DiaperTypeValue,capacity,scent,organicCertifications/organicCertification,screenSize/unit,screenSi/metal,isRefillable,plating,swatchImages/swatchImage/swatchImageUrl,swatchImages/swatchImage/swatchVariar/VariantAttributeName,variantGroupId,isPrimaryVariant,fabricContent/fabricContentValue,finish,isRecyclable,culturalS/fabricCareInstruction,brand,condition,manufacturer,theme/themeValue,modelNumber,manufacturerPartNumber,co

On this page all the Walmart Categories details are listed.

## 11.2. View Walmart Attributes

*The View Walmart Attribute menu has the following two sub-menus:*

- Simple type Attribute(<http://docs.cedcommerce.com/magento/walmart-magento-integration-guide-0-1-5-2?section=simple-type-attribute-2>)
- Configurable type Attribute(<http://docs.cedcommerce.com/magento/walmart-magento-integration-guide-0-1-5-2?section=configurable-type-attribute-2>)



### 11.2.1. Simple Type Attribute

A simple type attribute consists of all the list of attributes associated with the simple product.

#### *To view Walmart simple type attributes*

1. Go to **Magento Admin Panel**.
2. On the **Walmart** menu, point to **Extras**, and then point to **Manage Walmart Attribute**, and then click **Simple Type Attribute**.

The **Attribute Management** page appears as shown in the following figure:

Attribute Management		
Page 1 of 47 pages   View 20 per page   Total 934 records found		
Reset Filter Search		
Id	Walmart Attribute Name	Walmart Attribute Enum/Values
510	apparelCategory	Young Men's,Maternity Plus,School Uniforms,Men's Big Tall,Women's Plus,Petites,Maternity Wear,Newborn Girl,Boys,Baby Boy,Girls,Baby Girl,Newborn Boy,Juniors,Women,Men
4949	productIdentifiers/productIdentifier /productType	UPC,GTIN,ISBN,ISSN,EAN
398	gender	Unisex,Women,Men,Boys,Girls
1279	jewelryStyle	Religious,Fashion,Fine
1380	mpaaRating	PG,PG-13,G,R,NC-17,Unrated,Not Rated
804	esrbRating	Pending,Adults Only,Everyone 10+,Everyone,Mature,Teen,Early Childhood,Unrated,Not Rated
799	monochromeColor	Monochrome,Color
725	clothingSizeType	Junior Plus,Petite Plus,Big Tall,Plus,Juniors,Regular,Big,Husky,Slim,Tall,Petite
821	internalExternal	Internal,External
1371	fictionNonfiction	Fiction,Nonfiction

All the Simple Type Walmart Attribute details are listed.

### 11.2.2. Configurable Type Attribute

A configurable type attribute consists of all the list of attributes associated with the configurable products.

#### To view Walmart configurable type attributes

1. Go to **Magento Admin Panel**.
2. On the **Walmart** menu, point to **Extras**, and then point to **Manage Walmart Attribute**, and then click **Configurable Type Attribute**.

The **Configurable Attribute Management** page appears as shown in the following figure:

Configurable Attribute Management			
Page 1 of 4 pages   View 20 per page   Total 68 records found			
Reset Filter Search			
Id	Walmart Attribute Name	Walmart Attribute Doc	Walmart Attribute Enum/Values
1	color	Color value as provided by the manufacturer. Example: Aqua; Burgundy; Mauve; Fuchsia	
2	size	Example: S; M; L; 2; 4; 6	
3	flavor	Example: Chicken Lamb; Bacon; Beef Liver; Tuna	
4	scent	Descriptive term for fragrance. Example: Vanilla; Geranium; Rose	
5	assembledProductLength	Dimensions referring to the item as it is out of the box and assembled. Example: 5 in; 2 ft; 2.5 ft	
6	assembledProductWidth	Dimensions referring to the item as it is out of the box and assembled. Example: 5 in; 2 ft; 2.5 ft	
7	assembledProductHeight	Dimensions referring to the item as it is out of the box and assembled. Example: 5 in; 2 ft; 2.5 ft	
8	shape	Physical shape of the item. Example: Aviator; Cateye; Horned; Oval; Rectangle; Round; Square; Wayfarer	
9	material	Material makeup of the item. Fabric materials should be entered using the "Fabric Content" attribute. Example: Nickel; Metal; Plastic	
10	finish	Overall finish of the item. Example: Natural; Unfinished; Brown; Espresso; Oak	
11	babyClothingSize	Example: S; M; L; 2; 4; 6	

All the Configurable Type Walmart Attribute details are listed.